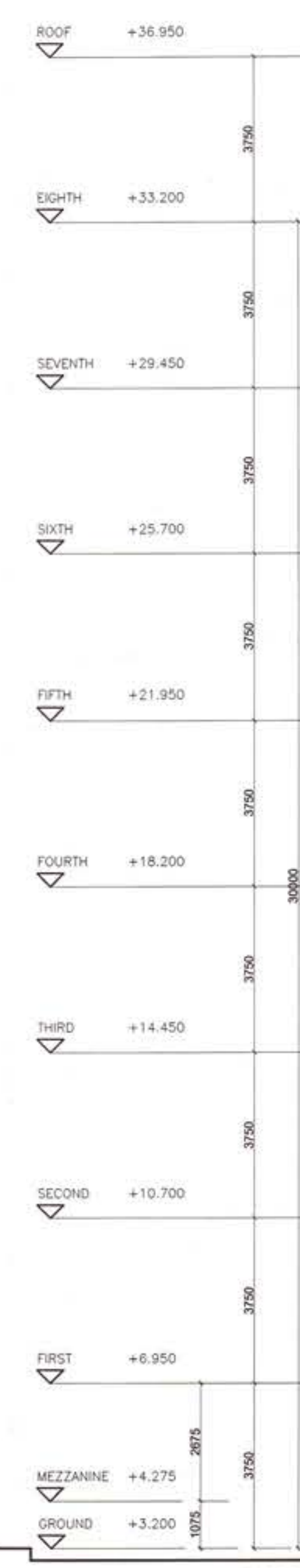




- LEGEND**
MATERIAL FINISHES
- 1 WHITE NATURAL STONE FACING - HORIZONTAL FORMAT WITH RETURNS TO SOFFITS AND RECESSED OPENINGS (BLUE GREY NATURAL STONE FACED PLINTH APPROX. 700mm HIGH)
 - 2 WHITE LOOK-A-LIKE SPANDREL PANELS WITH PROJECTING FACE CAPS
 - 3 DARK GREY CLADDING PANELS WITH RETURNS TO SOFFITS AND RECESSED OPENINGS
 - 4 DARK GREY POLYESTER POWDER COATED ALUMINUM FRAMED CURTAIN WALLING WITH CLEAR GLASS UNITS, INTEGRATED LOUVERS AND PROJECTING FACE CAPS HORIZONTALLY AT FLOOR LEVELS WITH SCREENS AND VERTICALLY ON PENTHOUSE LEVEL
 - 5 DARK GREY POLYESTER POWDER COATED ALUMINUM FRAMED CURTAIN WALLING LOOK-A-LIKE SPANDREL GLASS UNITS
 - 6 WHITE THROUGH COLOUR INSULATED RENDER SYSTEM
 - 7 DARK GREY LOUVER SYSTEM WITH INTEGRATED DOORS FOR ROOF ACCESS



FRANKLIN STREET SOUTH ELEVATION
9-21 Adelaide Street Redevelopment, Belfast

Area Planning Office RECEIVED
16 MAR 2015
File No. 12/18
DEPARTMENT OF THE ENVIRONMENT (NI)
AMENDED DRAWING

PLANNING DRAWING

CLIENT: McALEER & RUSHE

PROJECT: OFFICE DEVELOPMENT 9-21 ADELAIDE STREET BELFAST

DRAWING: FRANKLIN STREET SOUTH ELEVATION

STAGE: C-D NO: 14009 DL (PL) 201 Rev A

PLOT DATE: NA SCALE: 1:100

TODD
TODD ARCHITECTS
4143 HILL STREET
BELFAST BT9 0PB
T +44 (0) 28 9034 5587
F +44 (0) 28 9033 3363
E INFO@TODDARCH.CO.UK

STATUS	DESCRIPTION	DATE	CHECKED BY
-	Original drawing	05.02.15	MB
A	PLANNING AMENDMENTS	13.03.15	MB